

DENBY DALE PARISH COUNCIL NEWSLETTER

ISSUE 5

Council Offices Skelmanthorpe 01484 222963
Website: www.denbydale.com

FEBRUARY 2005
denbydaleparishcouncil@kirklees.gov.uk

November 2004

Unfortunately the school crossing patrol at Gilthwaites First School Denby Dale has been discontinued although the Parish Council did make strong representations to Kirklees MC to have this crossing retained, however, it will be reassessed in September 2005.

Council continue to push for an improved footway from Skelmanthorpe to Cumberworth via Ponker Lane.

The Council continue to liaise with Kirklees MC with regard to waiting restrictions in Station Road Skelmanthorpe and improving road safety at The Grove junction. The Council also expressed concerns at the design of the roundabout at the new development off Station Road.

December 2004

Continuing with the road safety issues from last month Kirklees MC has been asked for a site visit to address the safety issues in the vicinity of the Station Road junction at The Grove Inn Skelmanthorpe and also to look at the problems associated with the new roundabout in Station

Road Skelmanthorpe.

The Council has resolved to support the residents of Springfield Terrace Emley in their request for a 40 mph speed limit in Jagger Lane.

January 2005

Representatives from Linda's Nursery Skelmanthorpe attended the meeting asking for support in their campaign to have Bedale Drive gritted in bad weather. The Council agreed to contact Kirklees Highways on the safety issues, asking for Bedale Drive to be added to priority routes in a similar way to schools and public run nurseries.

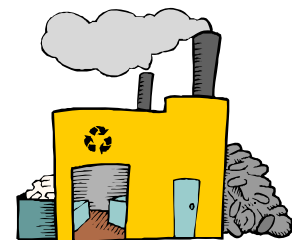
Kirklees MC has agreed to carry out an automatic speed check in Jagger Lane Emley.

In December the Council expressed concern at the possible closure of Bretton Hall College and it was reported, with sadness, that the College will close in 2007 but have received assurances that this will not have an adverse effect on the Yorkshire Sculpture Park.

What a Load of Rubbish

Have you ever thought what happens to the contents of your dustbins once they have been

emptied? I'm sure we're all aware it goes to Vine Street where the contents of our green bins are sorted for recycling. The Parish Council has been on a fact-finding mission to see just how much of our carefully washed and sorted rubbish we put in our green bins actually gets recycled. Currently it's 75% with moves afoot to increase this to 80 – 90%. What are recycled are plastic bottles, paper, cardboard and metal cans, not plastic bags, and what's important is that the materials are clean and dry, as people have to handle them. But this is only the half of it, what happens to the contents of your grey bin? Remember the Vine Street incinerator and the clouds of black smoke – well it's turned into a power station! The rubbish is no longer rubbish, it is fuel and it generates enough electricity to power every home in the Denby Dale area twice over.



DENBY DALE PARISH COUNCILLORS 2003 – 2007

Time To Get Fit

New Year, New You!

Did you make a New Year's Resolution to get fitter and lead a healthier lifestyle? Many of us did but it can be hard to keep motivated after an initial burst of enthusiasm. However, there is an easier way by joining PALS (Practice Activity and Leisure Scheme) – the exercise referral scheme based at Scissett Baths.

Join Becky Taylor from the PALS team in February at Skelmanthorpe Front Line Service Point for a series of PALS activity taster sessions.

Thursday 3 February - a stretch and flex class

Thursday 10 February - a circuit class

Thursday 17 February – a short walk from the library around Skelmanthorpe

All sessions run 2-3pm and will be followed by a chance for a chat over refreshments.

“PALS is a great way to become more active and at the same time meet new people. Through PALS you can join group activities, do a home-based programme or an individual programme at a sports centre. Whichever plan you choose, you will have lots of support and encouragement from the PALS team,” said Becky who works for Kirklees Culture and Leisure Services.

For more information or a chat about the scheme phone 01484 234095.

EMLEY WARD

Clr. Mrs. C. Beal	12 Wentworth Drive, Emley, HD8 9SL	01924 840062
Clr. Mrs. G. Hague	18 Church Street, Emley, HD8 9RW	01924 848711
Clr. D.W. Kaye	3 Chapel Lane, Emley, HD8 9SP	
Clr. E.I. Shaw	15 Rectory Lane, Emley, HD8 9RR	01924 848364

CLAYTON WEST WARD

Clr. I.D. Bowie	21 Riverside, Clayton West, HD8 9QN	01484 862479
Clr. R.S. Mottram	62 Long Lane, Clayton West, HD8 9PR	01484 862737
Clr. T.D. Sigsworth	2 Dukewood Road, Clayton West, HD8 9HF	01484 860534
Clr. G. Smith	25 Cliffe Street, Clayton West, HD8 9NR	01484 864254

DENBY & CUMBERWORTH WARD

Clr. J.A. Barlow	4 Greenside, Denby Dale, HD8 8QY	01484 862537
Clr. J.D. Carr	4 Miller Hill, Denby Dale, HD8 8RG	07941 039222
Clr. Mrs. M. Clarke	9 South Croft, Upper Denby, HD8 8UA	01484 861499
Clr. Mrs. S.A. Dellapuppa	65 Ings Mill Drive, Clayton West, HD8 9PW	01484 866097
Clr. C. Watson	7 Top Road, Lower Cumberworth, HD8 8PE	01484 863072
Clr. Mrs. V.M. Woodhead	The Cottage, Park Head, Birdsedge, HD801484 606114 8XW	

SKELMANTHORPE WARD

Clr. R.G. Allen	95 Huddersfield Road, Skelmanthorpe, HD8 9AR	01484 866131
Clr. J.C. Birdsall	12 Heather Fold, Skelmanthorpe, HD8 9LD	01484 860174
Clr. R. McSkimming	10a Station Road, Skelmanthorpe, HD8 9AU	01484 860070
Clr. G. Turner	20 Beechfield Avenue, Skelmanthorpe, HD8 9BZ	01484 864446
Clr. A.N. Weatherby	1 Saville Road, Skelmanthorpe, HD8 9ED	01484 863889

CLERKS OFFICE

Mrs. G. Wood – Clerk	Council Offices, Skelmanthorpe	Tel. & fax
Mr. K. Haigh – Assistant	Council Offices, Skelmanthorpe	01484 222963
	email:	
	denbydaleparishcouncil@kirklees.gov.uk	

COUNTRYSIDE OFFICER

Mr. A. Wickham	Council Offices, Skelmanthorpe	01484 222960
----------------	--------------------------------	--------------

For more information about the council and other local matters visit the Denby Dale Parish website at:

www.denbydale.com

Dates for your diary

Tuesday 1 March

Thursday 10 March

Tuesday 5 April

Tuesday 17 May

Friday 20 May

Parish Council

Denby Dale Area Committee

Emley venue to be announced

Parish Council

Annual Parish Meeting

*Cumberworth First School auction
at 7-30pm in Denby Dale Pie Hall*